

# Product Specification

Description	LED Amusement Lamp
Model NO	YJLED-007-SV16W

## Product Picture



Ip44 CE RoHS

## Product Application



Amusement LED Lamps are widely used in the park, Theme park, amusement park and all kinds of amusement machines



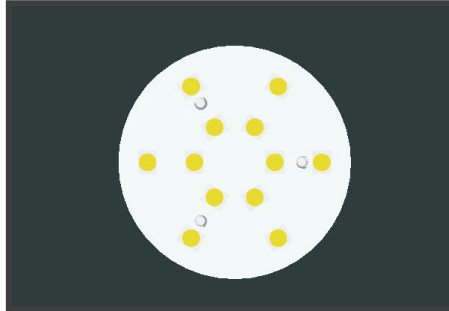
**SHENZHEN AGLARE LIGHTING CO., LTD**  
Web: [www.aglare.cn](http://www.aglare.cn) / [www.amusementlamp.com](http://www.amusementlamp.com)  
Email: [aglare@aglare.cn](mailto:aglare@aglare.cn)  
Tel: +86-75588868631

## Product Structure

SIDE



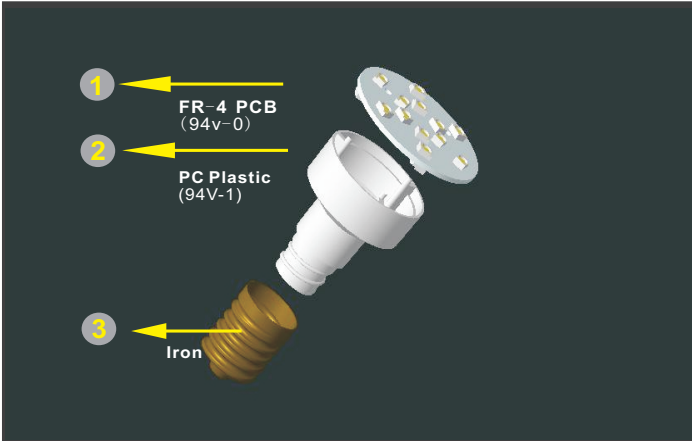
TOP



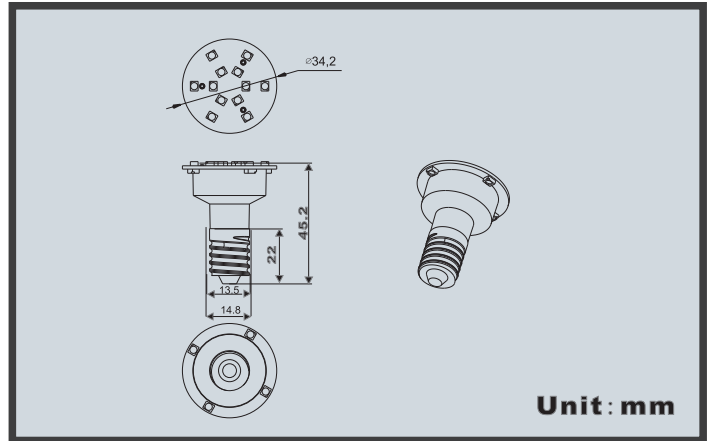
BOTTOM



### Product Material



### Product size

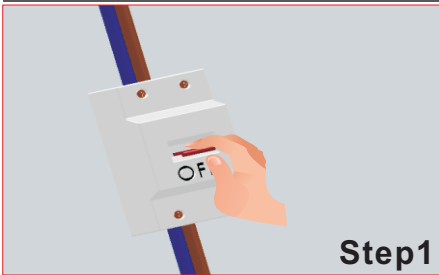


## Product Parameters

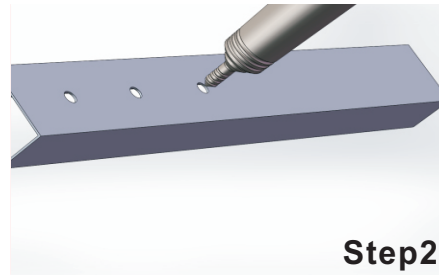
Part No.	Voltage	Color	Watts	LEDs	IP	Beam angle	Weight
YJLED-007-SV16W	AC110V		max1.2W	16pcs 3528	Ip44	120°	12.5g

R: 625-630nm G: 520-525nm B: 465-470nm Y: 585-595nm O: 600-605nm P: 390-410nm

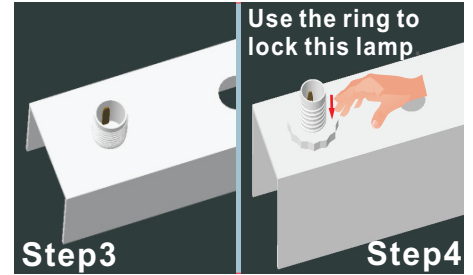
## Product Installation



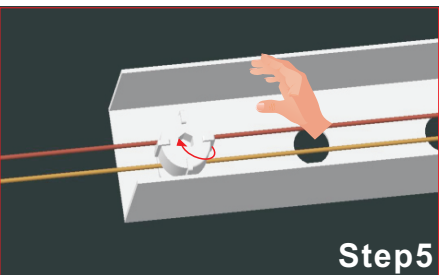
Turn off the power



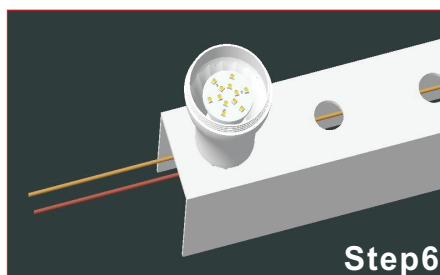
Dill hole( $\varnothing=19\text{mm}\sim 23\text{mm}$ )



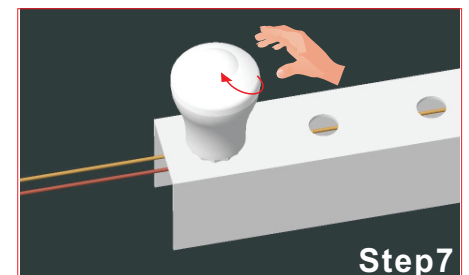
Through the lamp into the hole  
According to the order of 1-16



Spin this lid in a clockwise direction.



The lamp housing and lamp are installed into E14 lampholder.



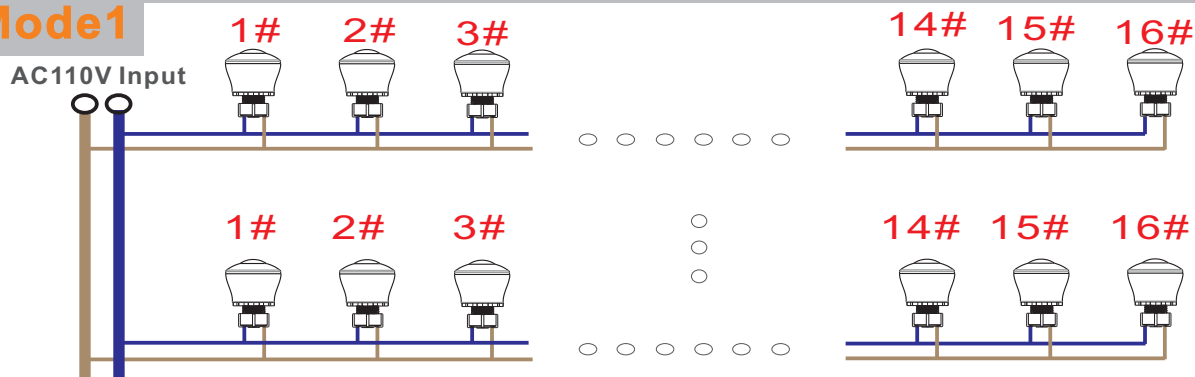
Install the upper cover.



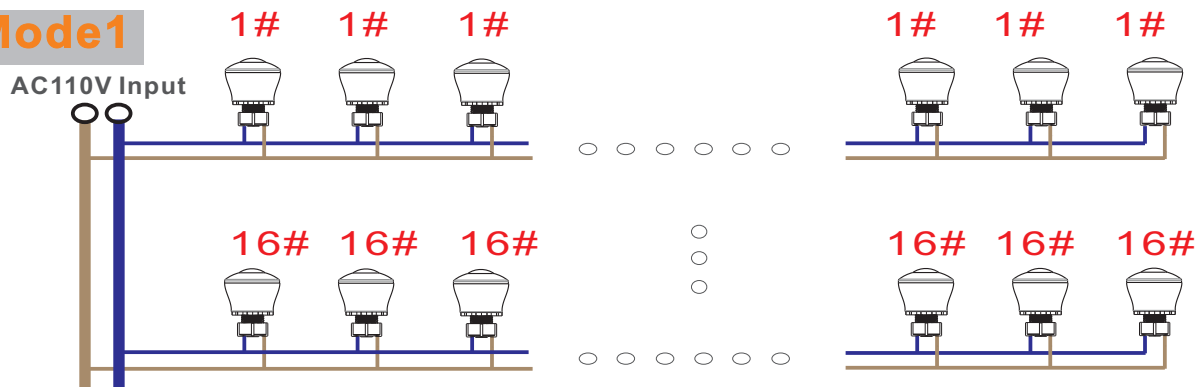
**SHENZHEN AGLARE LIGHTING CO., LTD**  
 Web: [www.aglare.cn/](http://www.aglare.cn/) [www.amusementlamp.com](http://www.amusementlamp.com)  
 Email: [aglare@aglare.cn](mailto:aglare@aglare.cn)  
 Tel: +86-75588868631

## Product Wiring Diagram

### Mode 1



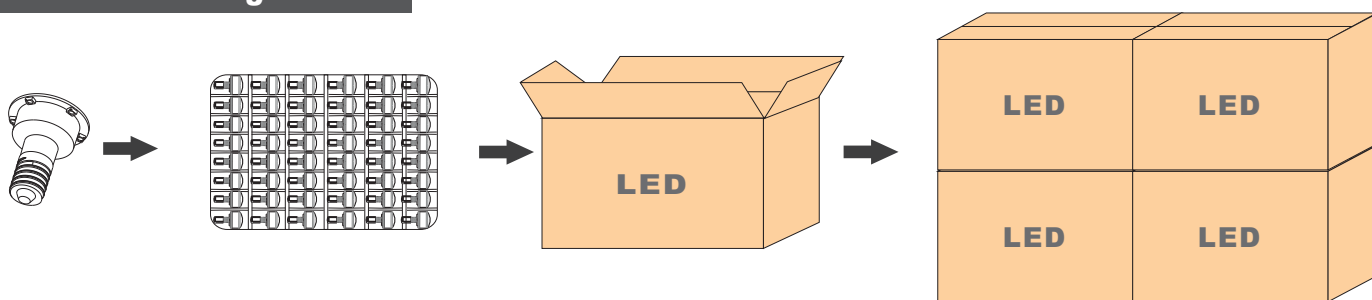
### Mode 1



## NOTE:

- 1 The power of the lamp is max1.2W;input voltageAC110V
- 2 The main wire is recommended for each square MM maximum 10A current
- 3 Non overload use

## Product Package



WEIGHT/PCS	Blister Size	G. W	PCS/CARTON	CARTON SIZE
12.5g	60*28.8*7cm	12.5KG	1003	61*36*38cm

### Instructions:

K=K Material Carton  
PVC blister box

## Caution

### Please read the specification before used:

Working temperature range  $-25^{\circ}\text{C}$ - $45^{\circ}\text{C}$

Working voltage range less than+ $_{-}10\%$

Please turn off the power before installation



**SHENZHEN AGLARE LIGHTING CO., LTD**

Web: [www.aglare.cn/](http://www.aglare.cn/) [www.amusementlamp.com](http://www.amusementlamp.com)

Email: [aglare@aglare.cn](mailto:aglare@aglare.cn)

Tel: +86-75588868631