

# Product Specification

Description	LED Amusement Lamp
Model NO	YJLED-054A-S288RGB-I-H32

## Product Picture



Ip20 CE RoHS

## Product Application

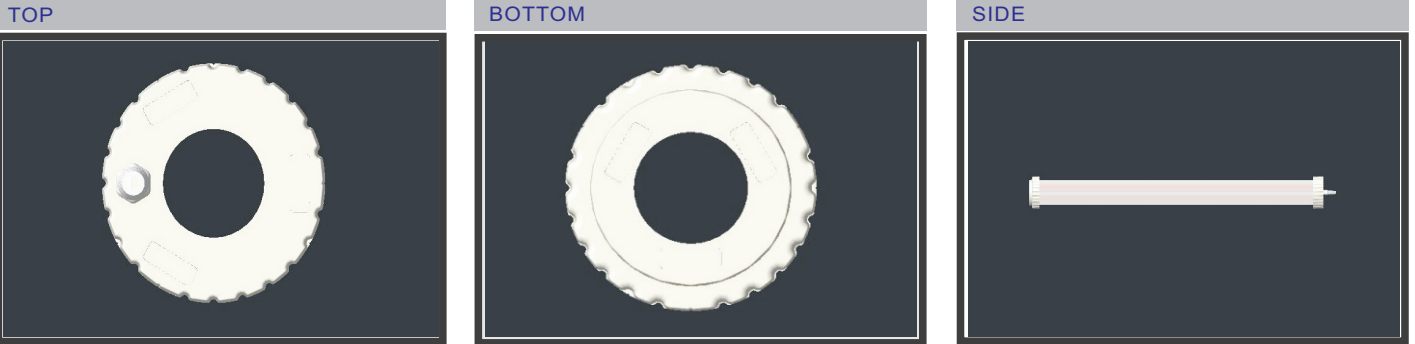


Amusement LED Lamps are widely used in the park, Theme park, amusement park and all kinds of amusement machines

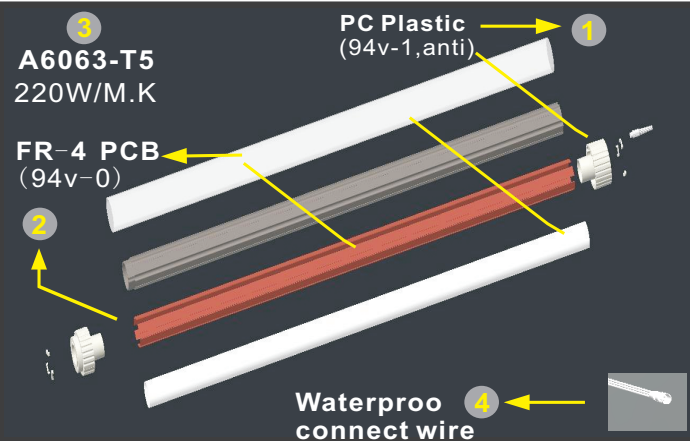


**SHENZHEN AGLARE LIGHTING CO., LTD**  
Web: [www.aglare.cn](http://www.aglare.cn) / [www.amusementlamp.com](http://www.amusementlamp.com)  
Email: [aglare@aglare.cn](mailto:aglare@aglare.cn)  
Tel: +86-75588868631

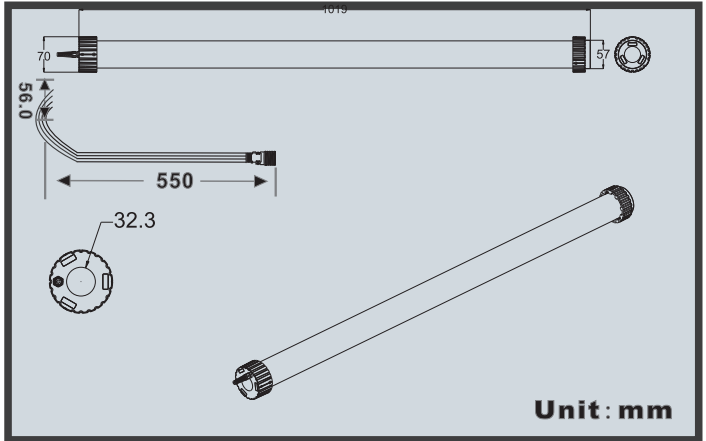
## Product Structure



### Product Material



### Product size

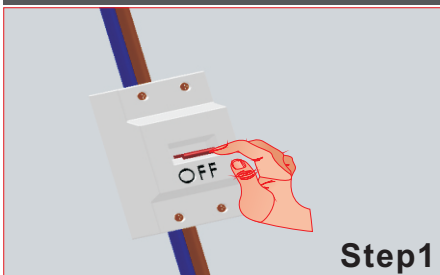


## Product Parameters

Part No.	Voltage	Color	Watts	LEDs	IP	Beam angle	Weight
YJLED-054A-S288RGB-I-H32	DC24V		max54W	288pcs RGB5050	Ip20	360°	1900g

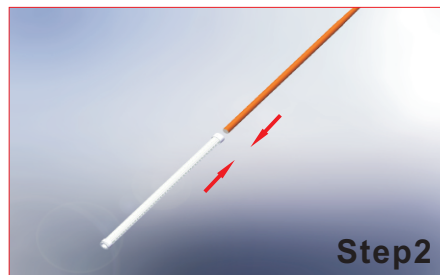
R: 625-630nm G: 520-525nm B: 465-470nm Y: 585-595nm O: 600-605nm P: 390-410nm

## Product Installation



Step1

Turn off the power



Step2

Put the lamp on the surface of the pole.



Step3

Connect the wire



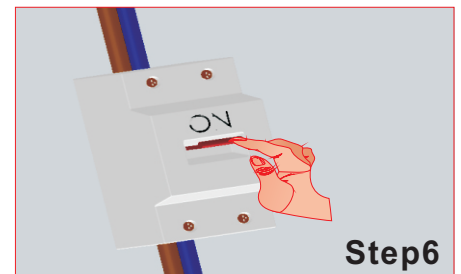
Step4

The lamp is fixed on the bumper cars



Step5

Fix the light on the surface of the rod with M8 screws.



Step6

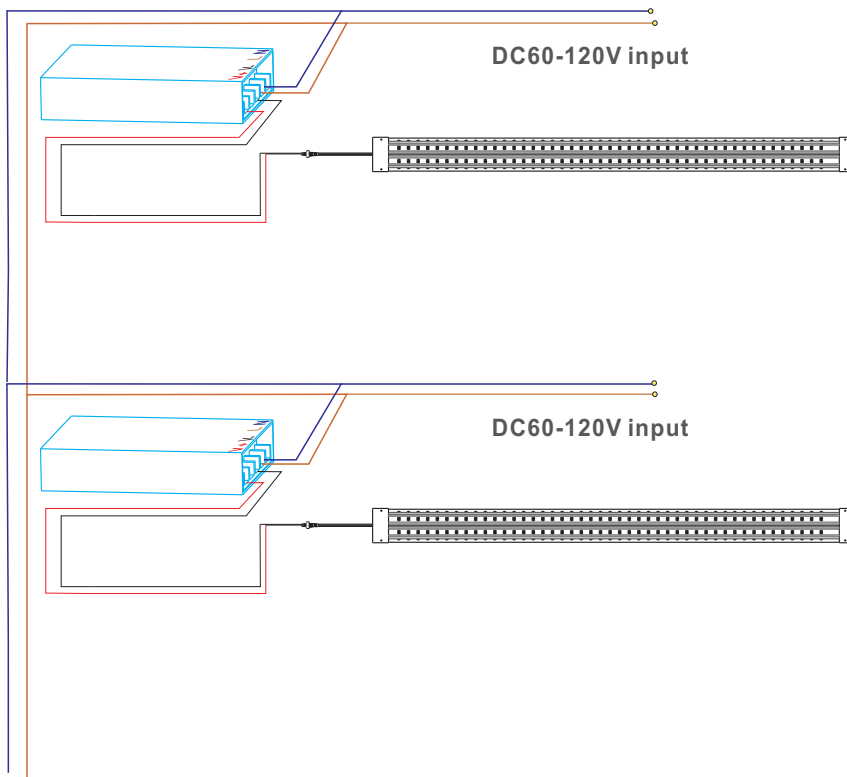
Turn on the power



**SHENZHEN AGLARE LIGHTING CO., LTD**  
 Web: [www.aglare.cn](http://www.aglare.cn) / [www.amusementlamp.com](http://www.amusementlamp.com)  
 Email: [aglare@aglare.cn](mailto:aglare@aglare.cn)  
 Tel: +86-75588868631

## Product Wiring Diagram

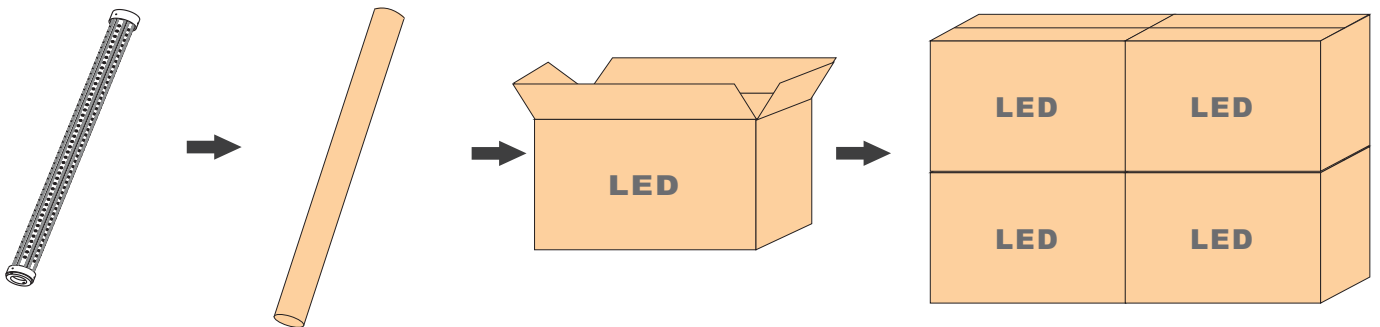
### Asynchronous Model



### Note:

1. The power supply output is DC24v,>54W
2. Please fix the power supply when installing

## Product Package



WEIGHT/PCS	N. W	G. W	PCS/CARTON	CARTON SIZE
1900g	1.9KG	16.2KG	8	110*30*12cm

### Instructions:

K=K Material Carton

## Caution

### Please read the specification before used:

Working temperature range  $-25^{\circ}\text{C}-45^{\circ}\text{C}$

Working voltage range less than  $+_{-}10\%$

Please turn off the power before installation



**SHENZHEN AGLARE LIGHTING CO., LTD**

Web: [www.aglare.cn/](http://www.aglare.cn/) [www.amusementlamp.com](http://www.amusementlamp.com)

Email: [aglare@aglare.cn](mailto:aglare@aglare.cn)

Tel: +86-75588868631



Product lighting effect.

