

Product Specification

Description	LED Amusement Lamp
Model NO	YJLED-067-S28RGB

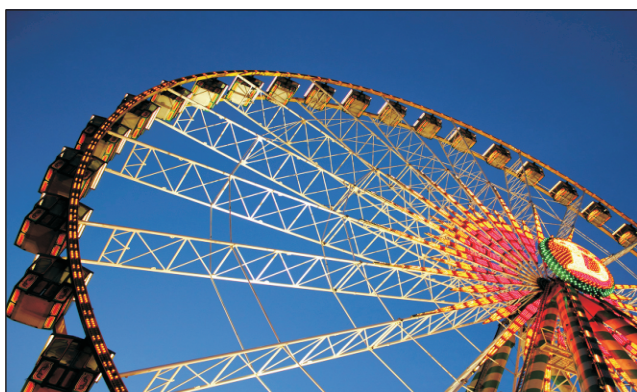
Product Picture



Ip65 C €



Product Application



Amusement LED Lamps are widely used in the park, Theme park, amusement park and all kinds of amusement machines



SHENZHEN AGLARE LIGHTING CO., LTD

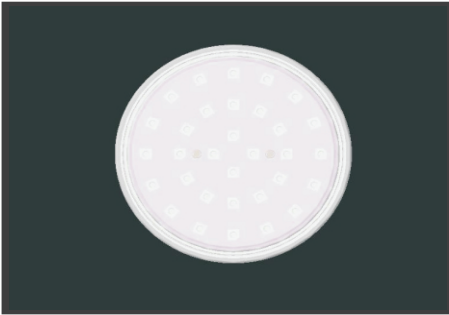
Web : www.aglare.cn/ www.amusementlamp.com

Email : aglare@aglare.cn

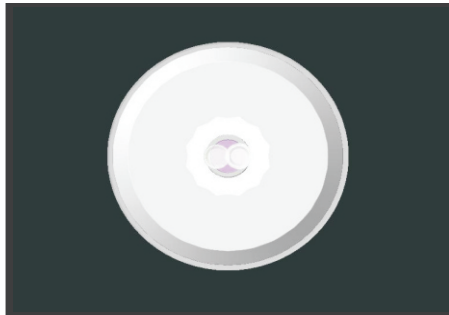
Tel : +86-75588868631

Product Structure

TOP



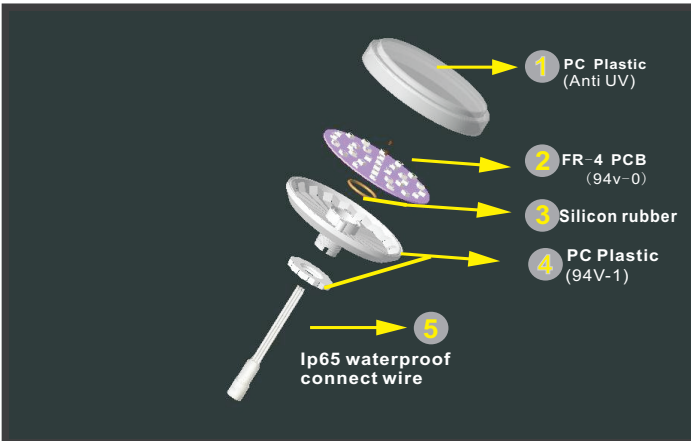
BOTTOM



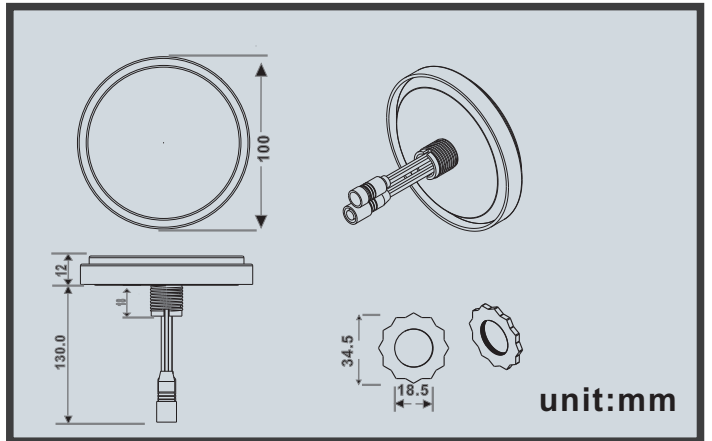
SIDE



Product Material



Product size

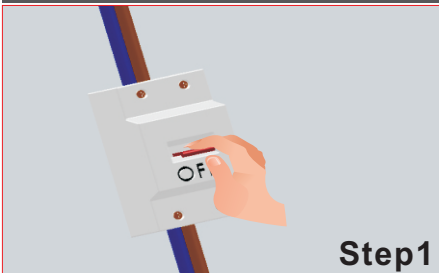


Product Parameters

Part No.	Voltage	Color	Watts	LEDs	IP	Beam angle	Weight
YJLED-067-S28RGB	DC24V		max5W	28pcs RGB5050	Ip65	120°	110g

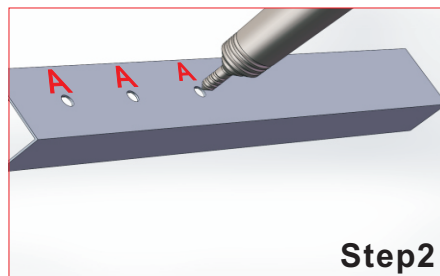
R:625-630nm G:520-525nm B:465-470nm Y:585-595nm O:600-605nm P:390-410nm

Product Installation



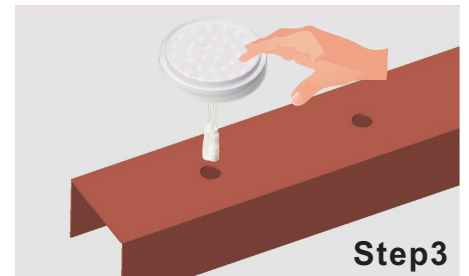
Step1

Turn off the power



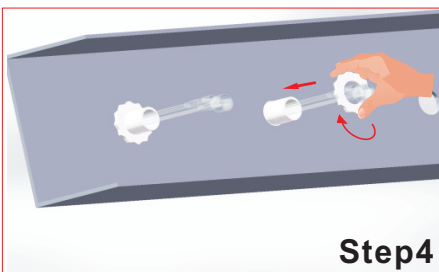
Step2

Drill hole($\varnothing=19\text{mm}\sim 23\text{mm}$)
(A to A=140mm~240mm)



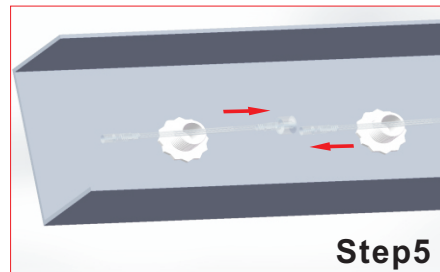
Step3

Through the lamp into the hole



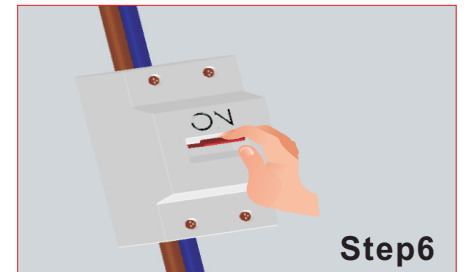
Step4

Use the ring to lock this lamp.



Step5

Connect the waterproof wire.



Step6

Spin this lid in a clockwise direction.



SHENZHEN AGLARE LIGHTING CO., LTD

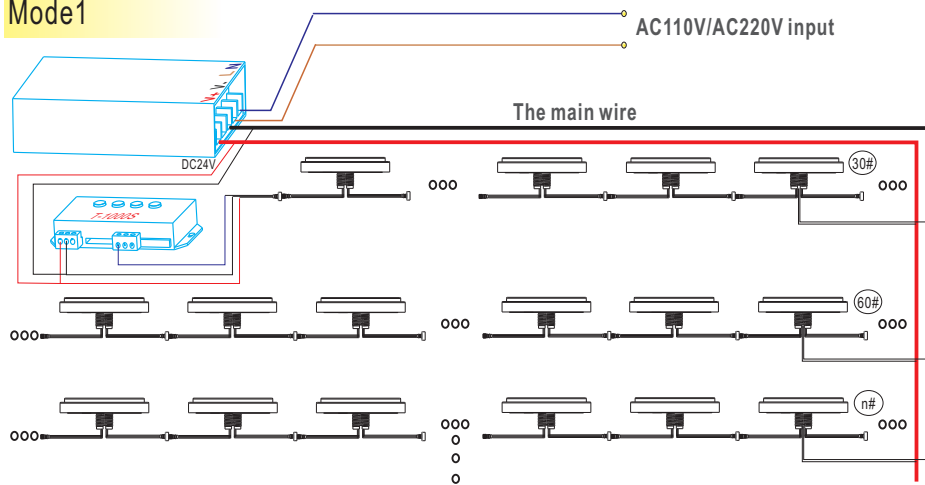
Web: www.aglare.cn / www.amusementlamp.com

Email: aglare@aglare.cn

Tel: +86-75588868631

Product Wiring Diagram

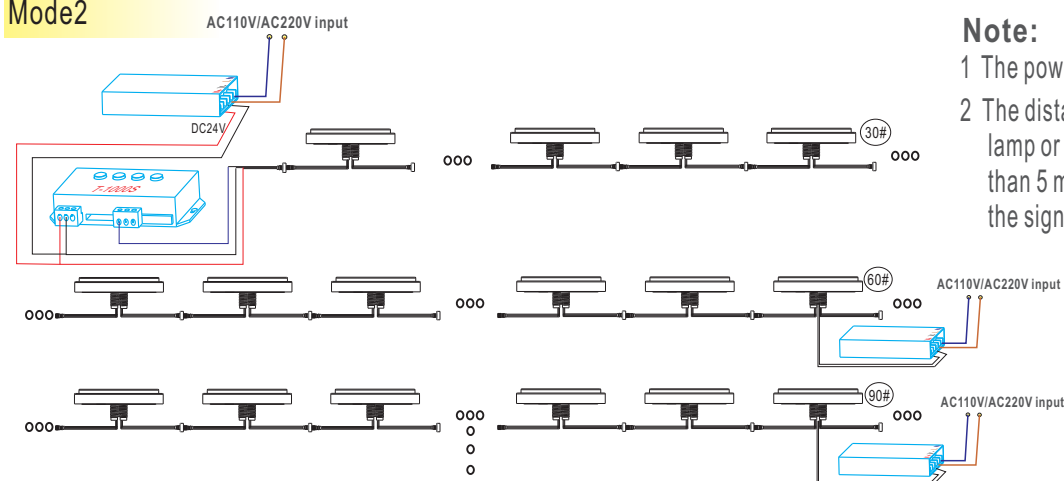
Mode1



Note:

- 1 The power supply output is DC24v,>n*5W
- 2 We offer one power wire for bulbs for per 30 pixel lamps
- 3 The main wire per square mm up to 10A current
- 4 The distance between the controller and the lamp or the lamp and the lamp must be less than 5 meters, Otherwise you need to connect the signal amplifier

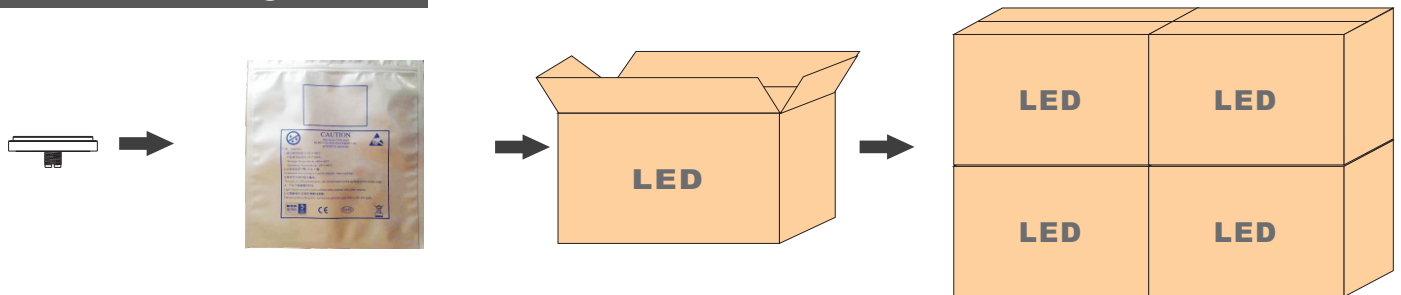
Mode2



Note:

- 1 The power supply output is DC24v,>150W
- 2 The distance between the controller and the lamp or the lamp and the lamp must be less than 5 meters, Otherwise you need to connect the signal amplifier

Product Package



WEIGHT/PCS	Box Size	G. W	PCS/CARTON	CARTON SIZE
110g	28*28*16cm	18KG	150pcs	60*30*35cm

Instructions:

K=K Material Carton
Electrostatic bag

Caution

Please read the specification before used:

Working temperature range -25°C-45°C

Working voltage range less than+_10%

Please turn off the power before installation



SHENZHEN AGLARE LIGHTING CO., LTD

Web: www.aglare.cn/ www.amusementlamp.com

Email: aglare@aglare.cn

Tel: +86-75588868631